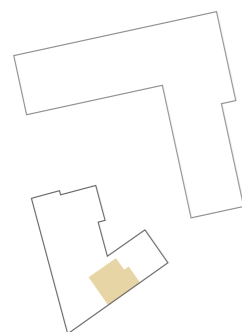
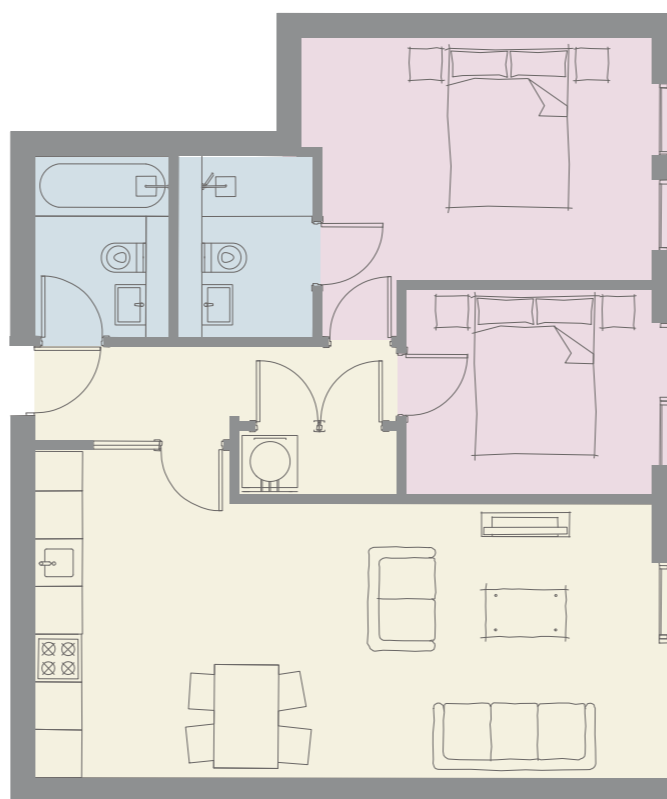
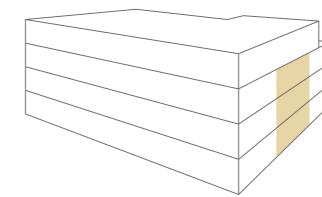




# SPRINGFIELD COURT

HARROGATE



## Ground, First & Second Floors Apartments 37, 43 & 50

Living/Dining/Kitchen	25' 5" x 13' 6"
Bedroom 1	14' 5" x 12' 5"
En-Suite	7' 6" x 4' 7"
Bedroom 2	10' 1" x 8' 6"
Bathroom	7' 6" x 5' 7"

IMPORTANT NOTICE: As part of their policy of continuous product development Newby reserves the right to make alterations, amendments or additions to the development or any part of it without prior notice. The plans and dimensions therefore are subject to change and intended for guidance only. All dimensions shown are maximum sizes.